

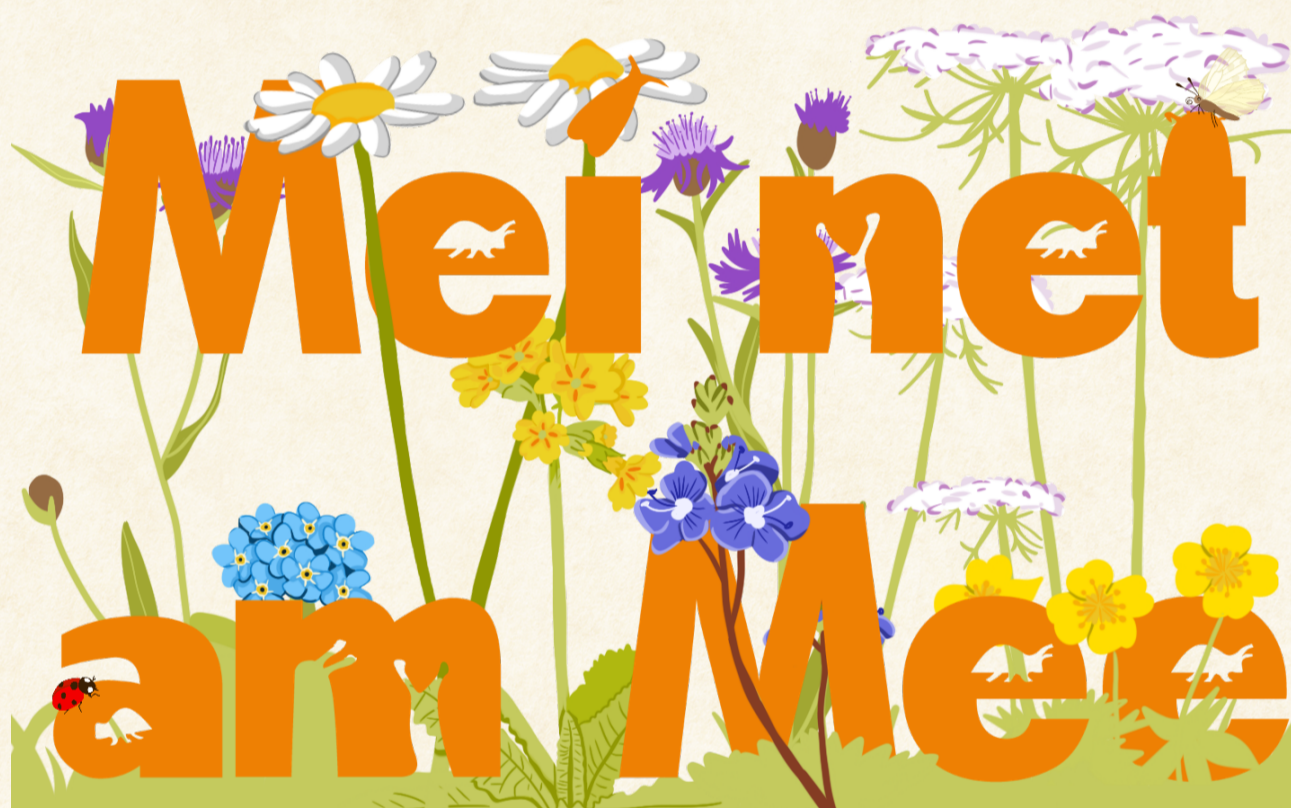
Grow your lawn and help our pollinators!



Sticker ↗

How can I participate?

You can get a sticker from one of the project partners to put on your letterbox to show your participation. You can send pictures of your garden to moien@sias.lu to enter our competition. You can also share your photos on social media using [#BlummefirBestebser](https://twitter.com/BlummefirBestebser).



What are the rules?

The rules are very simple: you don't mow in May. You don't have to let the whole lawn grow, but you can also spare only a part of it.

How can I help the pollinators with this?

The longer the mower is dormant in the spring, the better the chances of survival for the animals that overwinter on the ground or on the blades of grass. In addition, wild plants can colonise lawns that are mown late. An all grass lawn provides little habitat for insects and is not adapted to climate change.

Further information:

[#BlummefirBestebser](https://twitter.com/BlummefirBestebser)

moien@sias.lu

www.sias.lu/de/naturschutz/

biologische-station/mei-net-am-mee



Partners:

